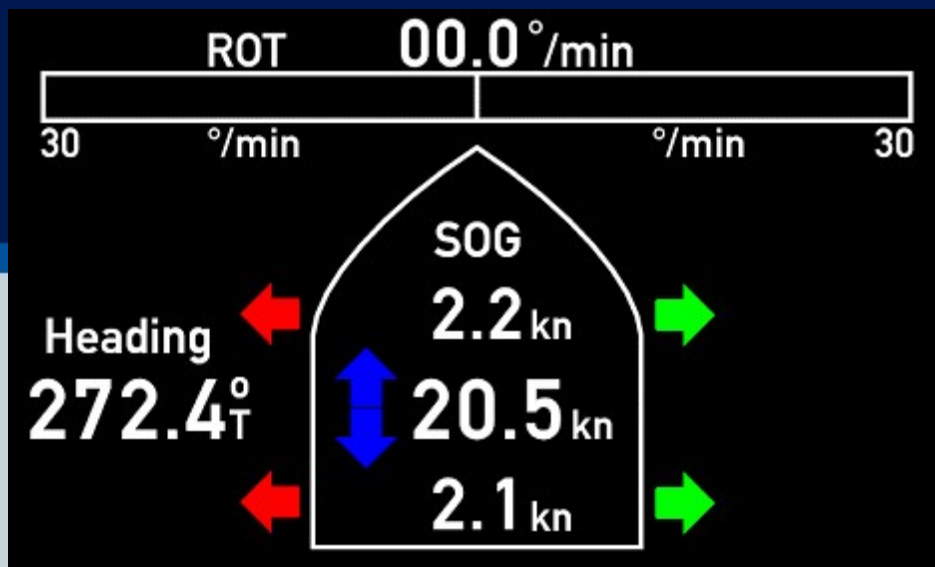




XDi 144/192 Navi

Docking Displays



Library owner: DEIF STANDARD NAV

Library number: 21

Library version: 2000

Table of Contents

1	LIBRARY INFORMATION	3
2	PRODUCT PROFILES (PP)	4
3	VIRTUAL INDICATORS (VI)	8
4	DETAILED VIRTUAL INDICATOR (VI) DESCRIPTION	9

Library description :

This library contains a selection of virtual indicators presenting relevant data for docking a ship. Depending of the selected virtual indicator it can be presented on one or more predefined screens.


Library status symbols :

 Released & Locked

 Approved

 Pending

 Draft

 Not approved



Timestamp 31-01-2022 10:18:11

Library Specification

Library owner no. : 000003
Library owner name : DEIF STANDARD NAV
Product type : XDi 144/192
Performance class : Navi
Library number : 21
Library name : Docking Displays
Library orientation : Landscape
Library status : Released & Locked
Library version : 2000

Last changed : 31-01-2022 10:18:03

Library default settings :

180 display rotation : False
CAN NodeID : 40

Library notes :

27-01-2022/JOL, Ver.2000: First release of this library including PP01 to 10 and VI01 to VI03




Product profiles (PP)







Default settings of product and system related parameters, as dimmer and CANbus settings are stored in a product profile.

Timestamp 31-01-2022 10:18:11

PP No.	PP Name	Description	Status	Notes
1	PP01 Front dimmer	<p>Dimming from front Dimmer from front buttons Default: Dim gr1. Auto Day/Night at 70%. RX/TX dimmer value on XDi-net.</p> <p>Supported NMEA sentences: Heading: HDG, HMR, VHW, HTD, HMR, VHW, HTD, THS and HDT. MagVar; HMR, RMC and HDG Rate of turn: ROT Speed: VBW Default: COM1 or 3 at 4.8 kbps</p> <p>Shares selected NMEA data on XDi-net</p>		<p>In an XDi-net system any XDi in a group can control the groups dimmer level when it uses this product profile.</p> <p>In the user menu the VI day/night mode can be set to fixed night mode, this can be useful for some VI types, where day night shift is not needed.</p>
2	PP02 Analogue	<p>Analogue dimmer AX1 module required on Slot 1 Dimmer potentiometer from Vref (term.3) to 0V (term.1) and wiper to term. 2.</p> <p>Default: Dim gr1. Auto Day/Night at 70%, Dim value shared on XDi-net</p> <p>Supported NMEA sentences: Heading: HDG, HMR, VHW, HTD, HMR, VHW, HTD, THS and HDT. MagVar; HMR, RMC and HDG Rate of turn: ROT Speed: VBW Default: COM1 or 3 at 4.8 kbps</p> <p>Shares selected NMEA data on XDi-net</p>		<p>In an XDi-net system one XDi with analogue dimmer input (AX1) can control the groups dimmer level Other Xdi units in the group should use PP03 (Default Gr.1. but can be changed).</p>
3	PP03 NMEA Gr.1	<p>NMEA dimmer Gr.1 NX2 module is required for NMEA dimming Without NX2 dimming is via XDi-net.</p> <p>DIMMER GR. 1 Auto Day/Night at 70%, Dim value shared on XDi-net</p> <p>Supported NMEA sentences: Heading: HDG, HMR, VHW, HTD, HMR, VHW, HTD, THS and HDT. MagVar; HMR, RMC and HDG Rate of turn: ROT Speed: VBW Dimmer: DDC Default: COM1 or 3 at 4.8 kbps</p> <p>Shares selected NMEA data on XDi-net</p>		<p>In an XDi-net system any XDi in group 1 can control the groups dimmer level when it uses this product profile.</p>

PP No.	PP Name	Description	Status	Notes
4	PP04 NMEA Gr.2	<p>NMEA dimmer Gr.2 NX2 module is required for NMEA dimming Without NX2 dimming is via XDi-net.</p> <p>DIMMER GR. 2 Auto Day/Night at 70%, Dim value shared on XDi-net Supported NMEA sentences: Heading: HDG, HMR, VHW, HTD, HMR, VHW, HTD, THS and HDT. MagVar; HMR, RMC and HDG Rate of turn: ROT Speed: VBW Dimmer: DDC Default: COM1 or 3 at 4.8 kbps</p> <p>Shares selected NMEA data on XDi-net</p>		In an XDi-net system any XDi in group 2 can control the groups dimmer level when it uses this product profile.
5	PP05 NMEA Gr.3	<p>NMEA dimmer Gr.3 NX2 module is required for NMEA dimming Without NX2 dimming is via XDi-net.</p> <p>DIMMER GR. 3 Auto Day/Night at 70%, Dim value shared on XDi-net Supported NMEA sentences: Heading: HDG, HMR, VHW, HTD, HMR, VHW, HTD, THS and HDT. MagVar; HMR, RMC and HDG Rate of turn: ROT Speed: VBW Dimmer: DDC Default: COM1 or 3 at 4.8 kbps</p> <p>Shares selected NMEA data on XDi-net</p>		In an XDi-net system any XDi in group 3 can control the groups dimmer level when it uses this product profile.
6	PP06 NMEA Gr.4	<p>NMEA dimmer Gr.4 NX2 module is required for NMEA dimming Without NX2 dimming is via XDi-net.</p> <p>DIMMER GR. 4 auto (5,6 manual) Auto Day/Night at 70%, Dim value shared on XDi-net Supported NMEA sentences: Heading: HDG, HMR, VHW, HTD, HMR, VHW, HTD, THS and HDT. MagVar; HMR, RMC and HDG Rate of turn: ROT Speed: VBW Dimmer Gr. 4 to 6: DDC Default: COM1 or 3 at 4.8 kbps</p> <p>Shares selected NMEA data on XDi-net</p>		<p>In an XDi-net system any XDi in group 4 can control the groups dimmer level when it uses this product profile.</p> <p>You can setup NMEA control of Dimmer gr. 4, 5 and 6 in the NMEA input menu.</p> <p>In the user menu you can also change the dimmer group controlling this XDi unit.</p>

PP No.	PP Name	Description	Status	Notes
7	PP07 NMEA Gr.1DC	<p>NMEA dimmer / colour Gr.1 NX2 module is required for NMEA dimming Without NX2 dimming is via XDi-net.</p> <p>DIMMER GR. 1 NMEA dimmer and Day/Night control Dim and Day/Night shared on XDi-net Supported NMEA sentences: Heading: HDG, HMR, VHW, HTD, HMR, VHW, HTD, THS and HDT. MagVar; HMR, RMC and HDG Rate of turn: ROT Speed: VBW Dimmer and Day/Night colour: DDC Default: COM1 or 3 at 4.8 kbps</p> <p>Shares selected NMEA data on XDi-net</p>		In an XDi-net system any XDi in group 1 can control the groups dimmer level and Day/Night when it uses this product profile.
8	PP08 NMEA Gr.2DC	<p>NMEA dimmer / colour Gr.2 NX2 module is required for NMEA dimming Without NX2 dimming is via XDi-net.</p> <p>DIMMER GR. 2 NMEA dimmer and Day/Night control Dim and Day/Night shared on XDi-net Supported NMEA sentences: Heading: HDG, HMR, VHW, HTD, HMR, VHW, HTD, THS and HDT. MagVar; HMR, RMC and HDG Rate of turn: ROT Speed: VBW Dimmer and Day/Night colour: DDC Default: COM1 or 3 at 4.8 kbps</p> <p>Shares selected NMEA data on XDi-net</p>		In an XDi-net system any XDi in group 2 can control the groups dimmer level and Day/Night, when it uses this product profile.
9	PP09 NMEA Gr.3DC	<p>NMEA dimmer / colour Gr.3 NX2 module is required for NMEA dimming Without NX2 dimming is via XDi-net.</p> <p>DIMMER GR. 3 NMEA dimmer and Day/Night control Dim and Day/Night shared on XDi-net Supported NMEA sentences: Heading: HDG, HMR, VHW, HTD, HMR, VHW, HTD, THS and HDT. MagVar; HMR, RMC and HDG Rate of turn: ROT Speed: VBW Dimmer and Day/Night colour: DDC Default: COM1 or 3 at 4.8 kbps</p> <p>Shares selected NMEA data on XDi-net</p>		In an XDi-net system any XDi in group 3 can control the groups dimmer level and Day/Night when it uses this product profile.

PP No.	PP Name	Description	Status	Notes
10	PP10 NMEA Gr.4DC	<p>NMEA dimmer / colour Gr.4 NX2 module is required for NMEA dimming Without NX2 dimming is via XDi-net.</p> <p>DIMMER GR. 4 auto (5,6 manual) NMEA dimmer and Day/Night control Dim and Day/Night shared on XDi-net</p> <p>Supported NMEA sentences: Heading: HDG, HMR, VHW, HTD, HMR, VHW, HTD, THS and HDT. MagVar; HMR, RMC and HDG Rate of turn: ROT Speed: VBW Dimmer and Day/Night colour, Gr. 4 to 6: DDC Default: COM1 or 3 at 4.8 kbps Shares selected NMEA data on XDi-net</p>		<p>In an XDi-net system any XDi in group 4 can control the groups dimmer level and Day/Night when it uses this product profile. You can setup NMEA control of Dimmer gr. 4, 5 and 6 in the NMEA input menu. In the user menu you can also change the dimmer group controlling this XDi unit.</p>

Virtual Indicators (VI)



The VI contains the graphical layout of and indicator and defines all data types that are presented on the indicator.

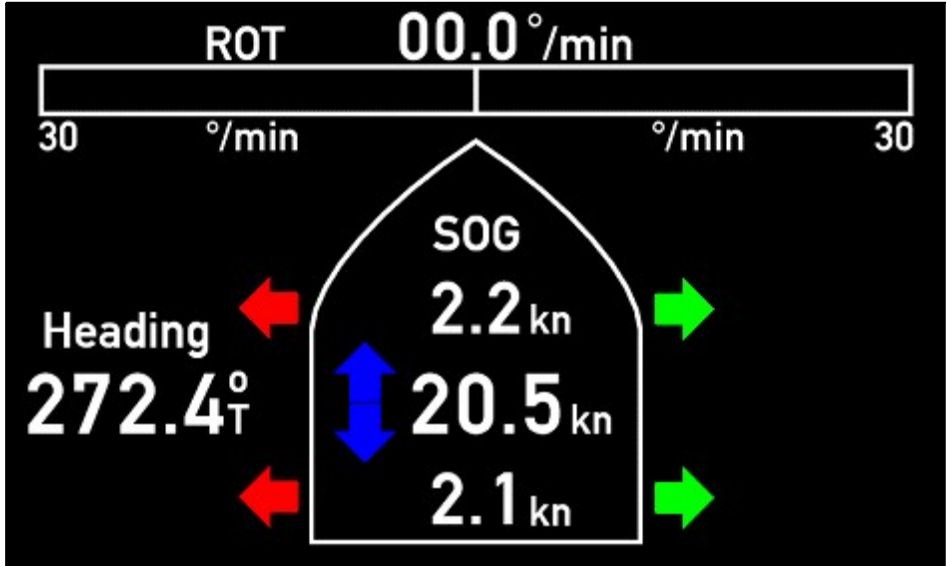
Each VI has at least one VI-setup profile (VS) that defines the input types and default parameter settings.

Timestamp 31-01-2022 10:18:11

VI No.	Name	VI-setup profiles (VS)	MED Approval	Status
001	Docking GS	1		
002	Docking WS	1		
003	Docking GS,WS	1		

VI 001	Docking GS
--------	------------


Screen 1 Mode 1



Description : Docking display - SOG


Rate of turn, speed over ground and true heading indication

Digital: Heading and ROT (max. +/-300)
 Long. speed, Transversal speed Bow and stern (max. +/-99.0 kn)

Status : 

VI Notes :

VI-setup profiles (VS) for VI001

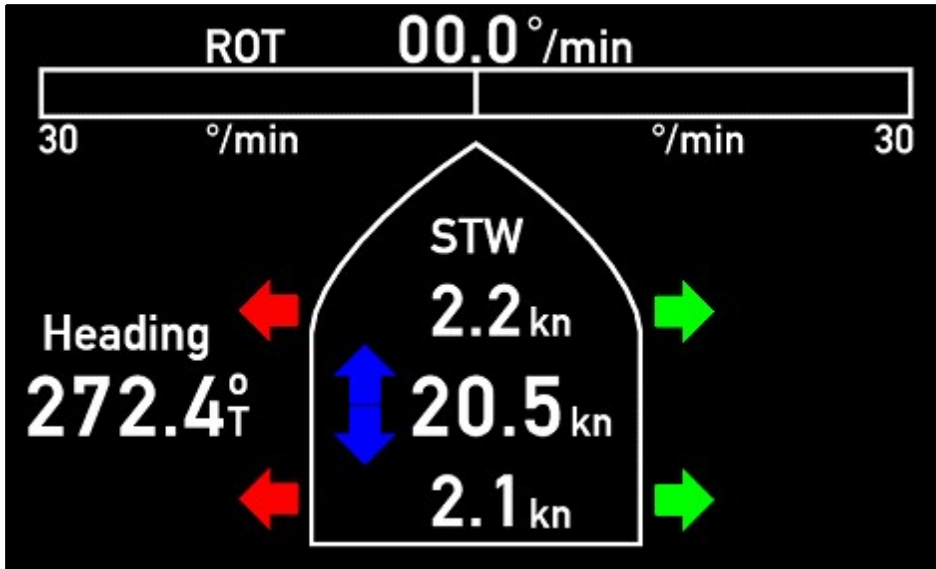
VS No.	Name	Description	Status	Notes
1	VS01 NMEA, XDi-net	<p>NMEA or XDi-net XDi-net (index) or NMEA input that requires NX2 module.</p> <p>ROT 1, (0x3AE1:02) Heading true 1, (0x3AB9:02) SOG Long.1, (0x3929:02) SOG Transv. Bow 1, (0x3931:02) SOG Transv. Stern 1, (0x3939:02)</p> <p>XDi-net is used if NX2 module is not mounted</p>		

VI 002

Docking WS

Screen 1

Mode 1




Description : Docking display - STW

Rate of turn, speed through water and true heading indication
 Digital: Heading and ROT (max. +/-300)
 Long. speed, Transversal speed Bow and stern (max. +/-99.0 kn)

Status : 

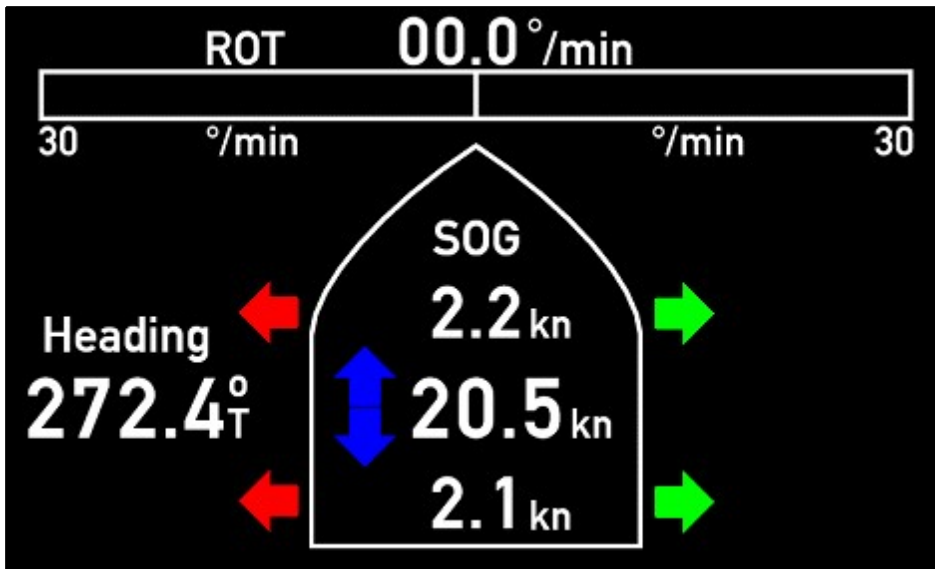
VI Notes :

VI-setup profiles (VS) for VI002

VS No.	Name	Description	Status	Notes
1	VS01 NMEA, XDi-net	<p>NMEA or XDi-net XDi-net (index) or NMEA input that requires NX2 module.</p> <p>ROT 1, (0x3AE1:02) Heading true 1, (0x3AB9:02) STW Long.1, (0x3909:02) STW Transv. Bow 1, (0x3911:02) STW Transv. Stern 1, (0x3919:02)</p> <p>XDi-net is used if NX2 module is not mounted</p>		

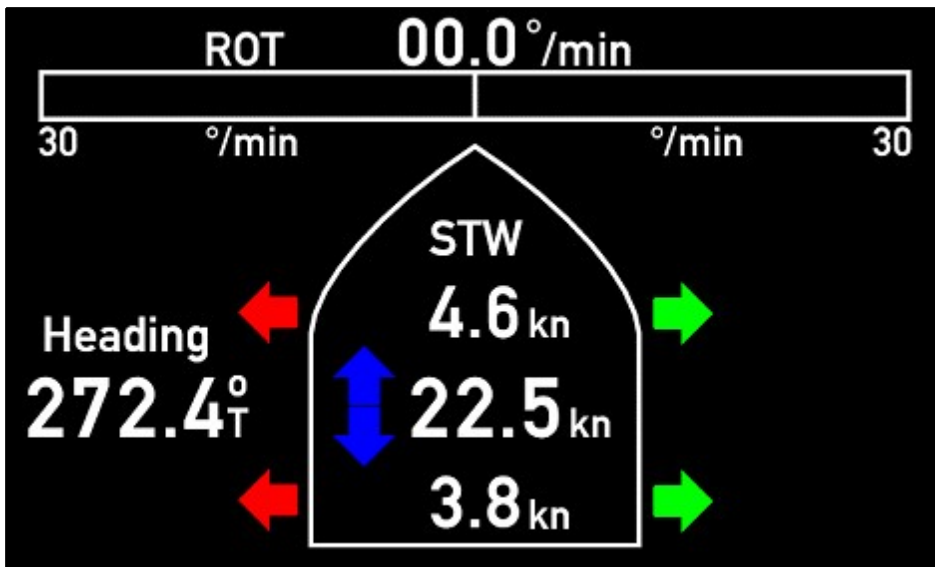
Screen 1

Screen1



Screen 2

Screen 2



Description : Docking display - 2 screens

Rate of turn, true heading indication and
 Sc.1 Speed over ground
 Sc.2 Speed through water
 Digital: Heading and ROT (max. +/-300)
 Long. speed, Transversal speed Bow and stern
 (max. +/-99.0 kn)

Status :



VI Notes :

VI-setup profiles (VS) for VI003

VS No.	Name	Description	Status	Notes
1	VS01 NMEA, XDi-net	NMEA or XDi-net XDi-net (index) or NMEA input that requires NX2 module. ROT 1, (0x3AE1:02) Heading true 1, (0x3AB9:02) SOG Long.1, (0x3929:02) SOG Transv. Bow 1, (0x3931:02) SOG Transv. Stern 1, (0x3939:02) STW Long.1, (0x3909:02) STW Transv. Bow 1, (0x3911:02) STW Transv. Stern 1, (0x3919:02) XDi-net is used if NX2 module is not mounted	